

KERALA AGRICULTURAL UNIVERSITY
REGIONAL AGRICULTURAL RESEARCH STATION, PILICODE
Pincode 671 310, Kasaragod (Dist.) Kerala.

No. B2/2093/2016 (iii)

Dated:07.10.2016

TENDER NOTICE

Sealed competitive tenders are invited for the supply of **items required for the construction and fabrication work of Poly House for Hi-Tech Farming** for “Agri Fiesta” purpose. The sealed Tender is to be forwarded to **The Associate Director, Regional Agriculture Research Station, Pilicode, Kasargod (Dist.)-671310.**

The items to be supplied with specifications are given below.

Sl.No	Component	Specification	Remarks
1	Gutter height	4.0 M	Maximum
2	Ridge height	6.5 M	maximum
3	Roof vent	0.60M	Vertical height(total height inclusive)
4	Width of each span	10.0 M	
5	Length	49 M	
6	Total covered area per block	1000.0 M ²	Length and breadth may vary according to site conditions
	No of blocks	2	
7	Roof Cover	Poly film	200 mm, UV stabilized, anti dust/ anti mist/anti drip
8	Cover for roof vent	Insect proof net	40mm UV stabilized, white
9	Perimeter cover	75 % green shade net	UV stabilized, green
10	Space between pillar posts &trusses	3.5 m	
11	purlins	12 rows per unit	
12	Roof extension projection beyond gutter height for rain protection	60 cm	(horizontal distance)
13	Drain/gutter pipe to collect rain water	163-200 mm HDPE/PVC	Split and half open/ molded and fitted along 4 sides of gutter
14	Thermal screen	50 % green shade net	UV stabilized, Collapsible or manually rollable, spread above gutter level
Structure			
15	Foundation	0.75 X 0.60 X0.60	RCC . project 30 cm above ground level
16	Foundation pillar	2.5 “	B class GI pipe 2mm Embedded in RCC (total 1 m)
17	Side column	3”	B class GI pipe 2mm
	Arched hoop	2”	B class GI pipe 2mm
18	Truss	2”	B class GI pipe 2mm
19	Truss support	1.5”	B class GI pipe 2mm

20	Purlins	1''X1''	B class GI tube 16 gauge
21	Cross/diagonal support between pillars	25mm	B class GI pipe 2mm
22	Aluminum profile for poly film locking	0.9kg/4m	C type
23	ZIG ZAG insert Spring wire for locking	2.3mm	High carbon steel, plastic coated

The details of the proposed work to be done with specifications are given below (Diagram Attached).

SI.No.	Details of work proposed	Specification	Qty	Unit	Rate	Amount
II	Fabrication of Structure:					
1	Excavation and fixing of RCC footing concrete(1:2:4) block of size 75cmX45cmX45cm including PCC at base, for fixing outer columns/pillars(0.2 M above ground level), the cost including concrete and labour and materials	81 Nos @0.15 cum	12.15	M ³		
2	Fixing GI pipes as foundation for fixing peripheral pillar/ columns of total height of 1.5 M including the bottom 0.6 M embedded and fixed in the concrete, top and bottom alignment etc.	2.5." (2mm) B class 1.5 M X 81	121.5	M		
3	Fixing GI pipes for peripheral pillar/ columns of total height of 4.0 M top and bottom alignment etc.	3.0 " (2mm) B class 4 M X 81	324	M		
4	Fixing B class GI pipes for connecting peripheral columns at gutter level including GI Tee, nuts and bolts and alignment etc.	2 " Gi pipe (2mm)	300	M		
5	Fixing B class GI pipes for cross bar connecting columns on opposite side as per design	2 " Gi pipe (2mm)	540	M		
6	Fabrication of arched hoop through bar bending machine	2 " Gi pipe (2mm) 24M x 27	648	M		
7	Fixing arched hoop structure with the proposed design for connecting each columns with B class GI tubings on roof side including alignment etc.	2 " Gi pipe (2mm) 24M x 27	648	M		
8	Fixing truss (arched hoop) cross inner connections with the proposed design with B class GI tubings on roof side including alignment etc.	1.5" Gi pipe (2mm)	324	M		
9	Fixing of cross connections for roof vent with B class GI tubings	1.5 "X 0.75" GI tube (16 gauge)	81	M		
10	Fixing B class GI tubings as purlins for providing connection between trusses including welding, nuts and bolts and alignment etc.	1.0 "X 1.0" GI tube (16 gauge)	1200	M		
11	Fixing B class GI tubings along the perimeter at middle and bottom for fixing channels	1.0 "X1" GI tube (16 gauge) 100M x 4 + 20 M X2	480	M		

12	fixing B class GI pipes in the front and back as vertical support for trusses	1.5 "X 0.75" GI tube (16 gauge) 4M X 6X2	48	M		
13	Support between central pillars and trusses on either side	1.25 " GI pipe	81	M		
14	Fabrication and fixing of Angle brackets for central pillar for fixing gutter support as per design	27	27	No		
15	fixing drainage channels in the gutter with split PVC pipes/ GI sheet	163-200 mm HDPE/PVC/GI	100	M		
16	Supply and fixing top plate bottom plate for columns and top and bottom alignment	15 cm ² (4mm) (27X4X3)	324	No		
17	Misc. items like GI coupler, Tee, end cap, nuts, screw & bolts etc.,	LPS				
18	Epoxy coating and painting with liquid metal (silver) paint for the columns, trusses, purlins and connecting pipes including cost of paint and labour	2 coats		LPS		
19	Fixing B class GI tubings for providing horizontal support between front and back of stalls for supporting GI sheet partition including welding, nuts and bolts and alignment etc.	1.0 "X1" GI tube (16 gauge)	784	M		
20	Fixing B class GI tubings for providing vertical support connection between top and bottom GI sheet partition including welding, nuts and bolts and alignment etc.	1.5 "X 3/4" GI tube (16 gauge)	560	M		
21	Fixing B class GI tubings for fixing tube light to stalls including welding, nuts and bolts and alignment etc.	1.0 "X1" GI tube (16 gauge)	400	M		
22	Fixing partitioning between stalls with corrugated and coated traffold sheet (3mm blue color) 3.3m X1.1 m	2X28x4	224	No		
23	Fixing partitioning behind the stalls with corrugated and coated traffold sheet (3mm blue color) 3.3m X1.1 m	2X28x3	168	No		
24	Fixing of UVstabilised shadenet below gutter level around poly house perimeter except front	75 % shade net UV stabilised	880	M ²		
25	Fixing of weedmat as floor cover for the stalls	uv stabilised green	2000	M ²		
26	Fixing of UVstabilised poly film for roof cover	200 micron anti dust/ antidrip	2400	M ²		
27	Fixing of UVstabilised shadenet for thermal screen above gutter level inside poly house collapsable or manually rollable	50% shade net UV stabilised	1960	M ²		
28	Fixing of insect proof net for roof vent	50% shade net UV stabilised	300	M ²		
29	Fixing of Aluminium profile/channels for locking poly films	1" C type	1000	M		

30	Fixing of zigzag insert spring wire for locking polyfilm and shade net	high carbon steel, plastic coated 2.3 mm	1000	M		
31	Coated GI wire for cross connection/fastening /supporting shade net	14mm	50	kg		
32	Fabrication, Welding and installation charges			LPS		
33	Logistics, transportation & handling charges			LPS		
TOTAL						

Prices may be quoted in the above given format for unit rates either per meter/sq.m /kg/or numbers as applicable along with remarks for the brands supplied.

Delivery date of items	Within 1 week of confirmation of tender
Last date for receipt of the Tender	At 03.00pm on 25/10/2016
Date and time of opening of Tender	At 03.30pm on 25/10/2016

Terms and conditions

1. Tender form

The tender form may be downloaded from the following web link in the internet www.kau.in/tenders. The cost of tender form and EMD will be accepted by way of separate DDs taken in favour of **Associate Director, Regional Agricultural Research Station, Pilicode Pin Code 671310, Kasargod Dist.** along with tender. The tender cost and vat amount should be specified, while submitting the tender.

Cost of Tender Form : Rs.1500/- + VAT Rs.75/- (as separate DD's)

2. Earnest Money Deposit (EMD):

EMD Rs.4,000/- may be remitted by separate DD drawn in favour of **Associate Director, Regional Agriculture Research Station, Pilicode - 671310, Kasaragod Dist.**

3) The tender should be accompanied by an agreement in Kerala stamp paper worth **Rs.200/- (Rupees Two Hundred Only)** in the format which can be downloaded from the website, www.kau.in/tenders.

4) The sealed cover containing the tender documents should be super scribed as "**Tender for poly house materials and fabrication work**". The cover should contain the DD's for tender cost, EMD, VAT and the agreement required.

5) The successful tenderer should execute an agreement in Kerala Stamp paper worth Rs.200/- (Rupees Two Hundred Only) and furnish a security deposit of 5% of cost the equipment quoted in the form of term deposit/bank guarantee/demand draft drawn in favour of **Associate Director, Regional Agriculture Research Station, Pilicode - 671310, Kasaragod Dist. payable at the State Bank of Travancore, Kayyur (Branch Code SBTR000573)**, when directed from this office. The format of this agreement also can be downloaded from the website, www.kau.in/tenders.

6) The cost of the item, tax and other charge should be separately stated. The items should be supplied at our premises.

7) The exact specification, details of make, model, name of the manufacturer, name of the country etc of the item must be clearly specified. The technical literature and brochures of the item have also to be furnished along with the tender.

8) Warranty details, firmness of the quoted price should be clearly stated.

9) The Associate Director has the right to accept or reject any or all of the offers without assigning any reason.

10) If any Harthal/strike/any unexpected holiday occurs on the date of opening of tender. The tender will be opened at the same time on the next working day.

All the rules and regulation applicable to Government tender will be applicable to this tender also.

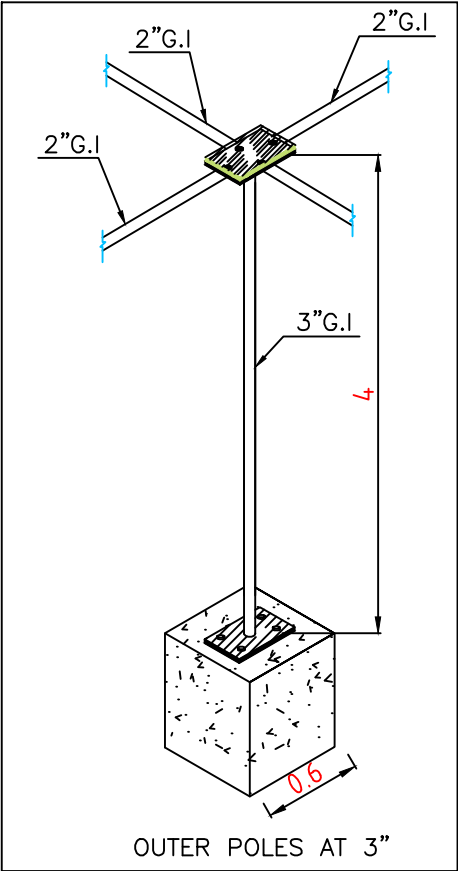
Special Conditions

1. Tenders insisting payment in advance either full or part for releasing the documents through bank are liable for rejection.
2. Leaflets/brochures containing technical features on the different models of the items quoted should be attached with the tender.
3. In the case of electrically operated equipment, the circuit diagram will have to be supplied.
4. Payment will be made after satisfactory installation and demonstration of the working of the equipment.
5. Operation manual and guarantee cards of the equipments wherever required should be supplied along with equipment.
6. The supplier should attach the client list for the equipments along with their performance certificate, spare parts availability and services facilities at or nearest to the concerned station.
7. Details of warranty offered should be clearly stated in the tender. Details of maintenance service contract offered after expiry of normal warrantee and after-sales service facilities available should be indicated.
8. Evidence of exclusive/authorized distributorship from foreign principals should be provided along with the offers for overseas products.
9. Complete deduction or reduction in number of any equipment listed, if necessary, at the time of purchase order without assigning any reason will be at the discretion of the Associate director.
10. The decision of the under signed in finalizing the tenders shall be final and binding.

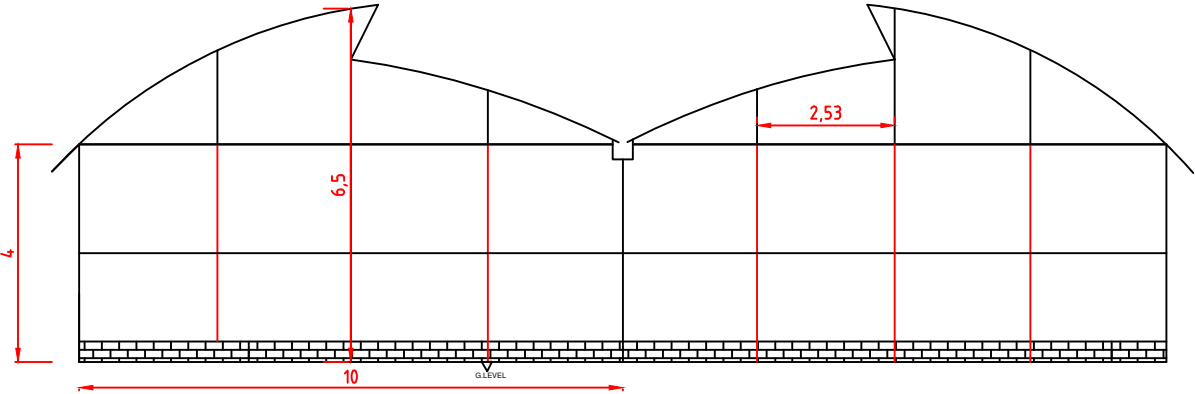
***Enquiries if any may be mailed to adrpil@kau.in or 0467 2260450/0467 2260632**

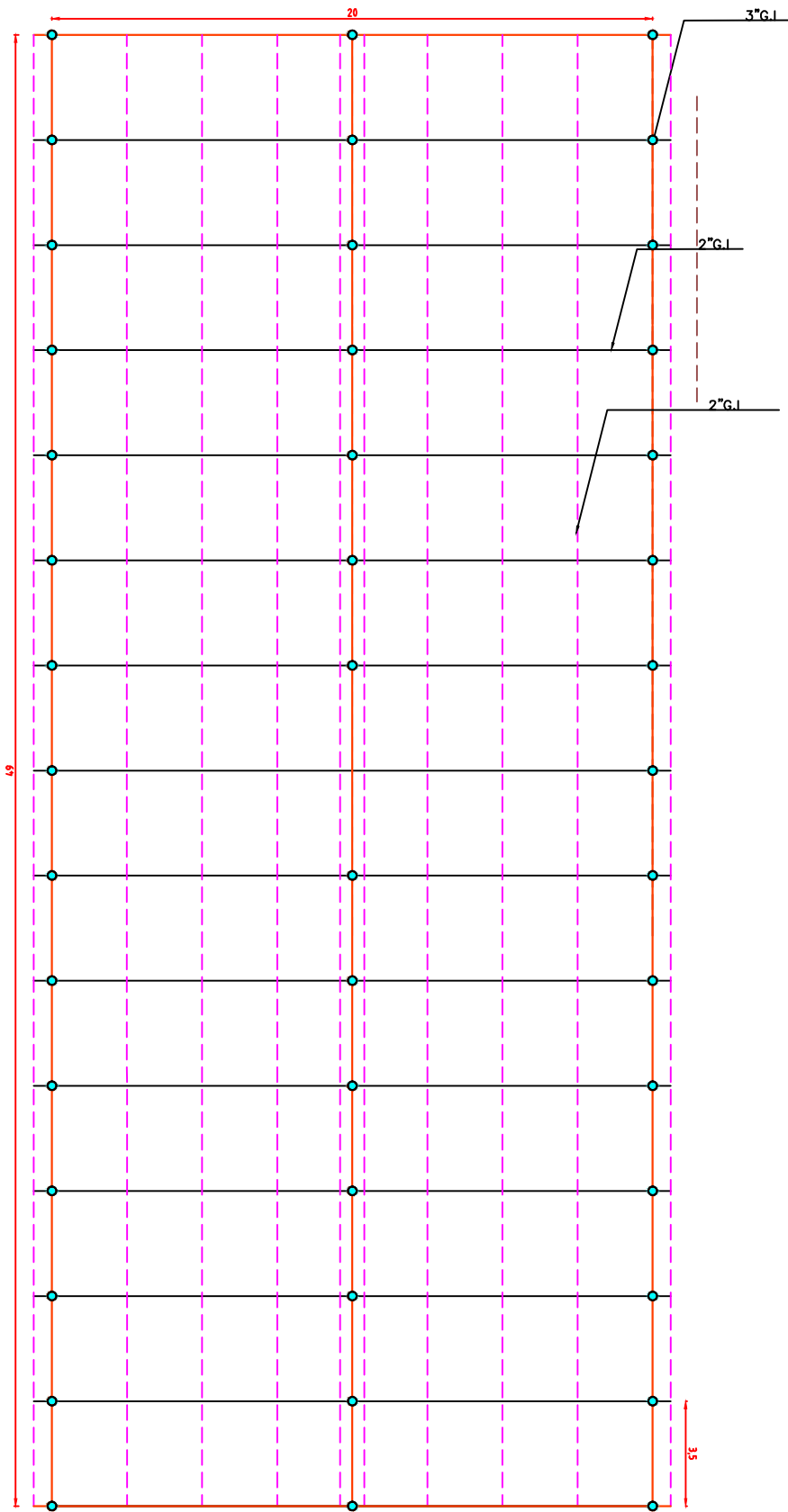
To: Firms/Notice Board/KAU website.

Sd/-
ASSOCIATE DIRECTOR



POLY HOUSE ELEVATION





SHADED HOUSE PLAN

